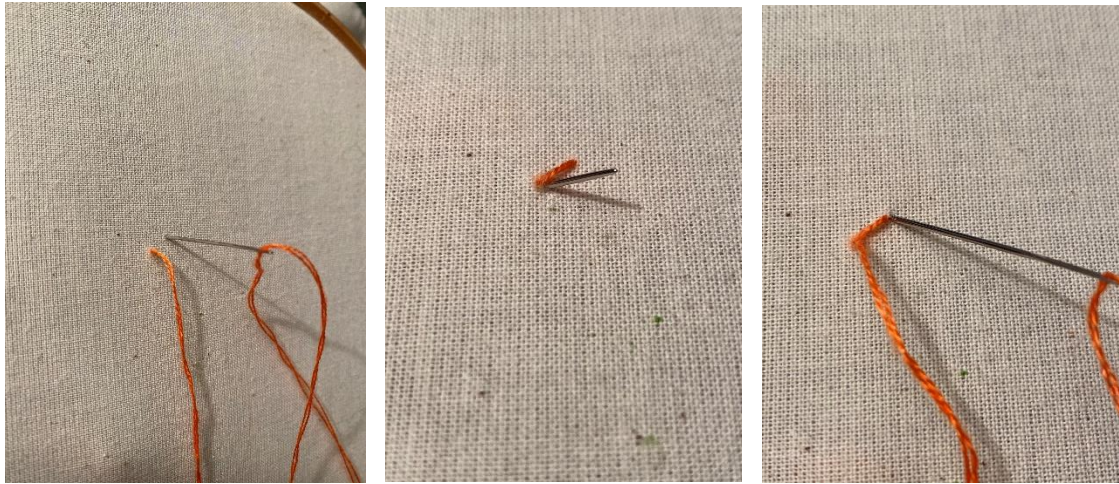


## Stem Stitch

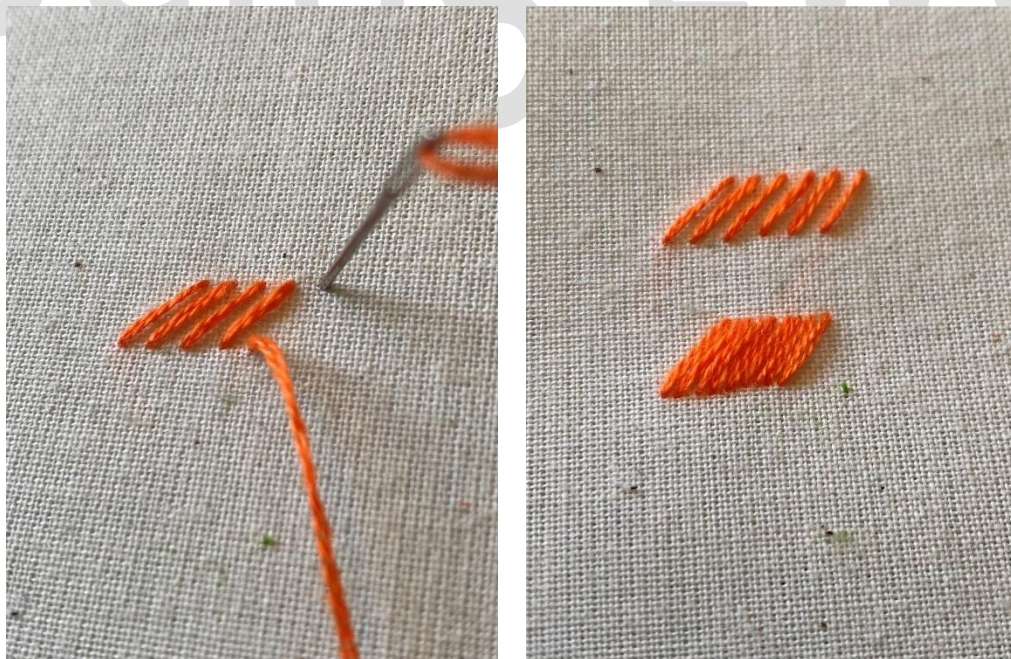


Stem stitch is comprised of a series of diagonal stitches, and can be used to create curves.

Start by creating a diagonal stitch, from bottom left to top right.

Then, create a series of these stitches, one next to each other.

The examples below show a version with space between the stitches, and also a version (more traditional) without spaces.







Stem stitch is also used to create curves.

Start with a diagonal stitch as before.

Start the second stitch about a  $\frac{1}{4}$  of the way up your first stitch. Make this stitch at a bit more of an angle than the first stitch, as in the picture.

