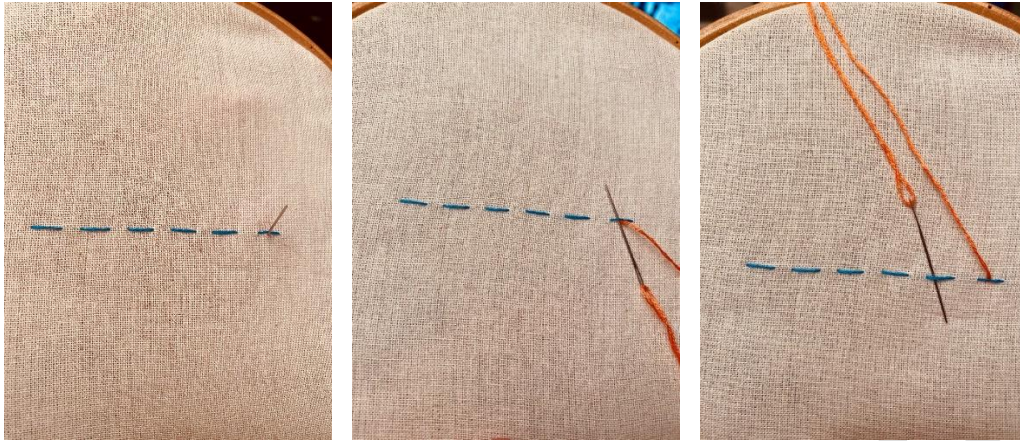


Whipping Stitch



Create a line of running stitches with the first colour.

With the second colour come up almost underneath the first stitch, and thread the needle underneath.

Then, thread the needle in the opposite direction through the second of the running stitches. Continue weaving through the running stitches



Finish in a similar vein to the start, pull the thread to the back of the fabric almost underneath the last running stitch

