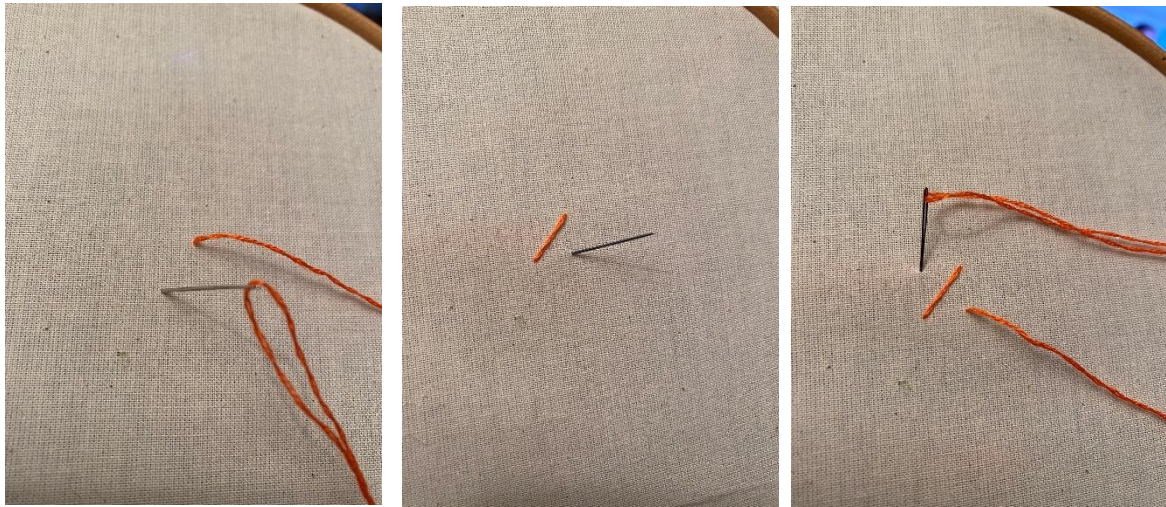


Woven Cross Stitch



Create a straight stitch at an angle from North East to South West (top right to bottom left!)
Finish the cross by creating a straight stitch in the opposite direction.
Next you need to create another straight stitch similar to your first one – rather than using the same holes, create the stitch parallel to the first – just above it.





When you do the final stitch, weave it through the two stitches – under the first, over the second.

Being Ewe

And, ta daaa.!

