

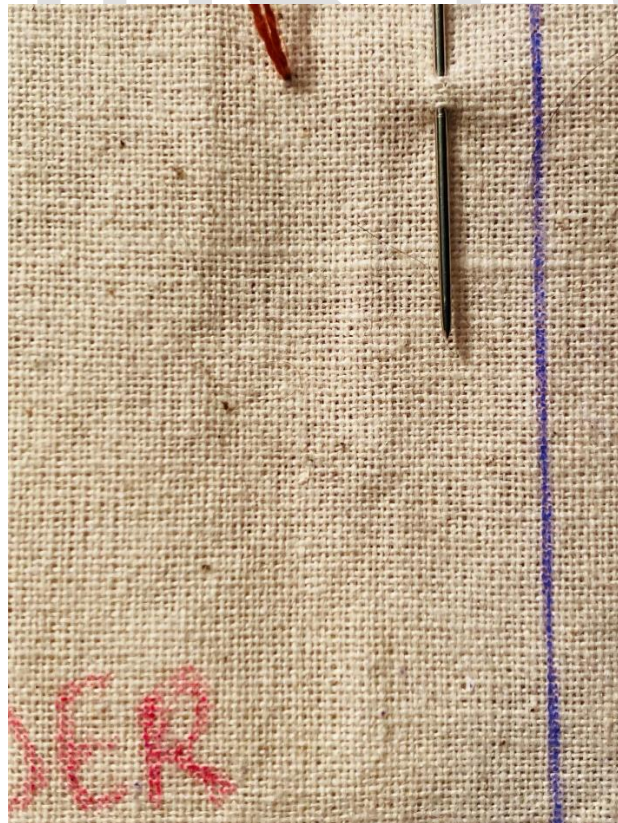
Lace Border Stitch

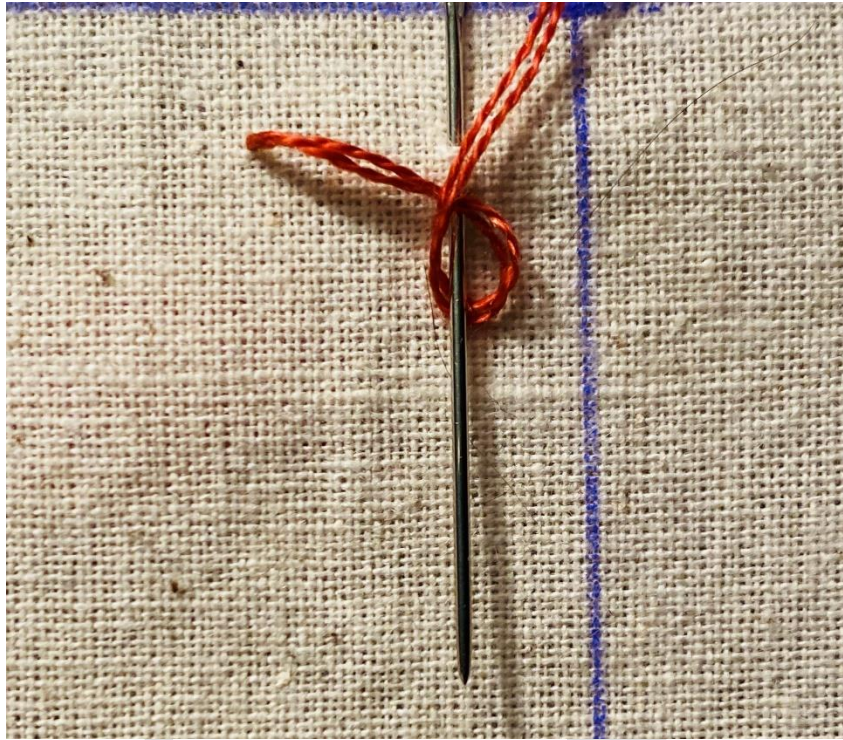


The lace border stitch does what it says – it's a stitch to use at the border of a piece, and has a lace-like effect, especially when stitched in a long string with fine cotton.

It is stitched from top to bottom, in a long row.

Start by coming up at the top left of the stitch. Go back down to the left of the stitch (without pulling the needle all the way through) – and then bring the needle up again, right below, relatively close.

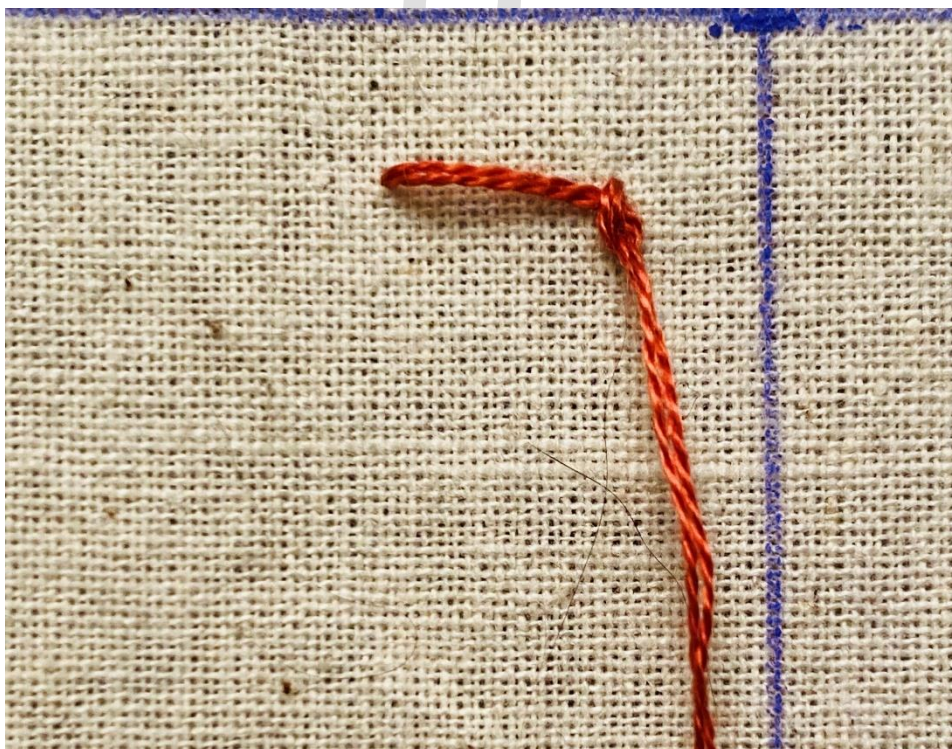




Keeping the needle in position, wrap the thread around the needle by putting the thread over the needle, and then underneath back towards where you started, and then back up to the top right.

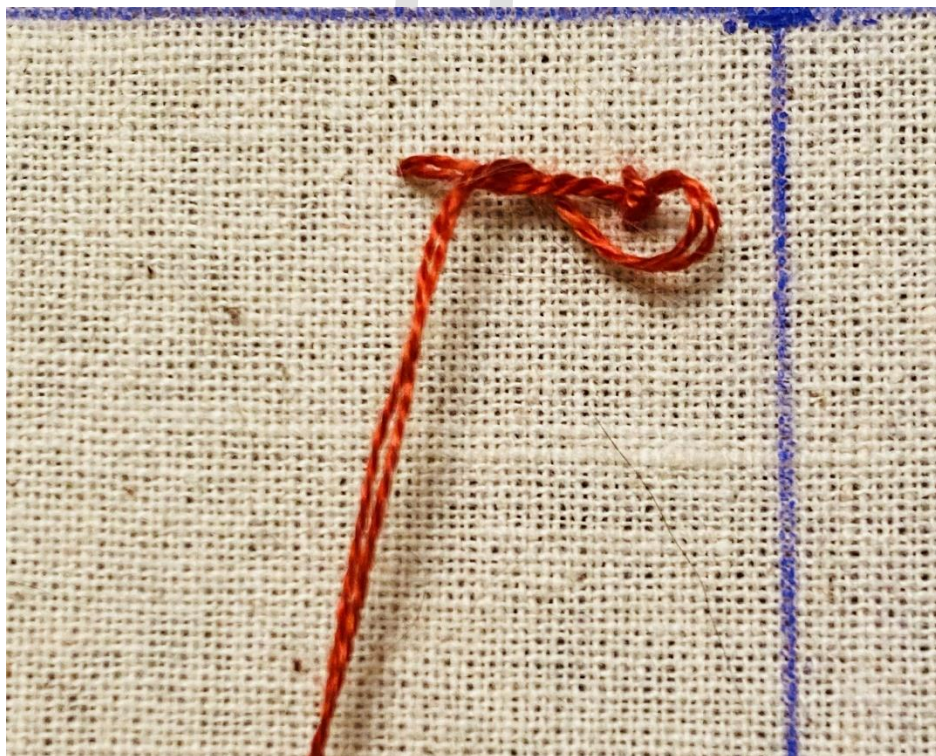
See the picture.

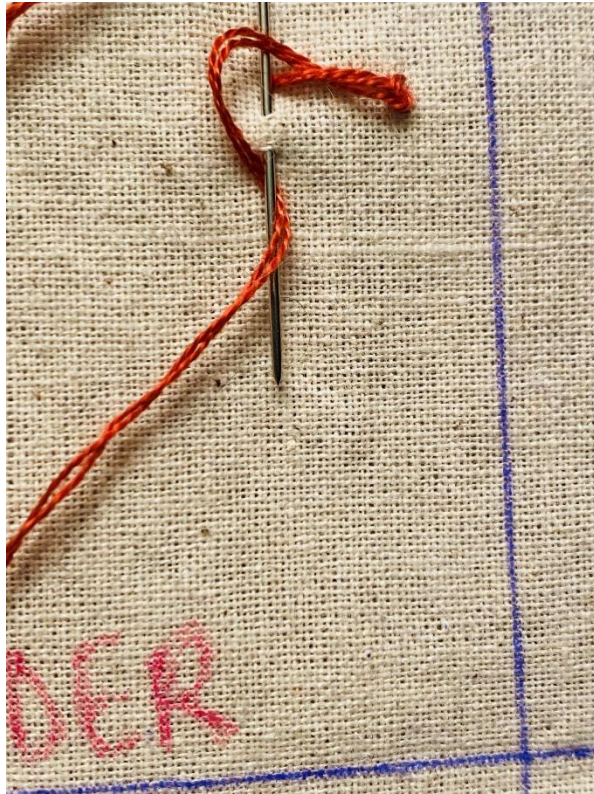
Pull the needle through, and tighten the knot.





Bring the needle under the stitch you've just done, from bottom to top, and then back over the stitch, to the bottom again. See the picture.



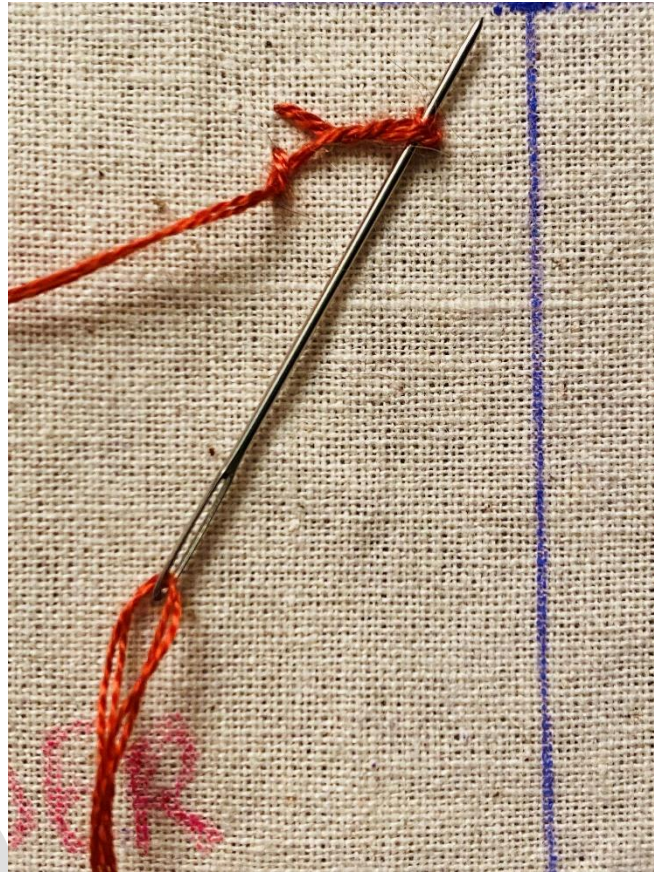


In the same way you put the needle under and back up in one go, without pulling the needle through, earlier to the right of the stitch – do the same again, but on the left, just under where you started. Don't pull the needle all the way through.

Then wrap the thread around the needle again – under the needle from the left to the right, and over from the right to the left.

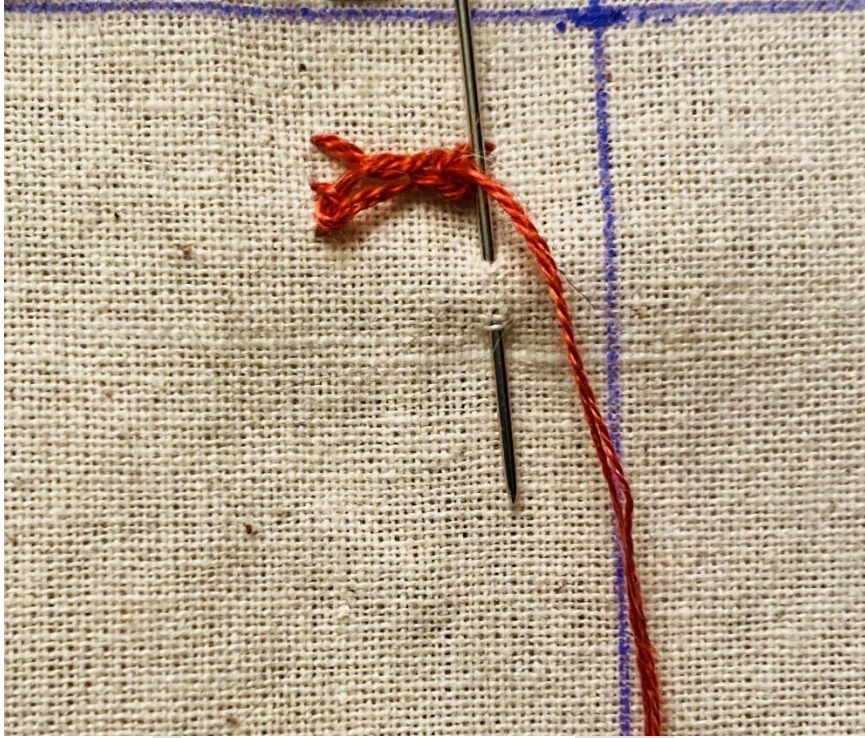
Pull the needle through, and tighten the knot.





Bring the needle through the middle of the first knot from the bottom to the top.

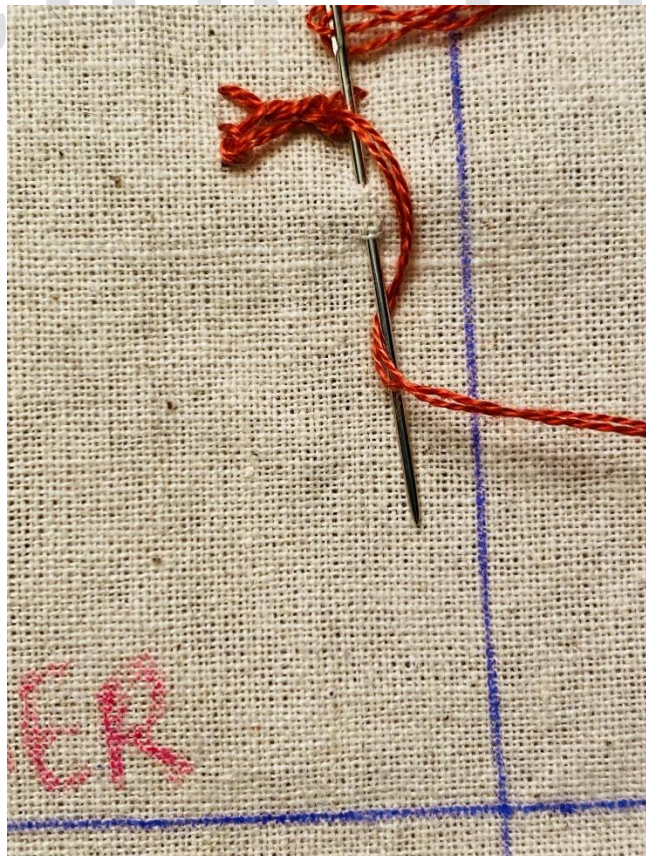


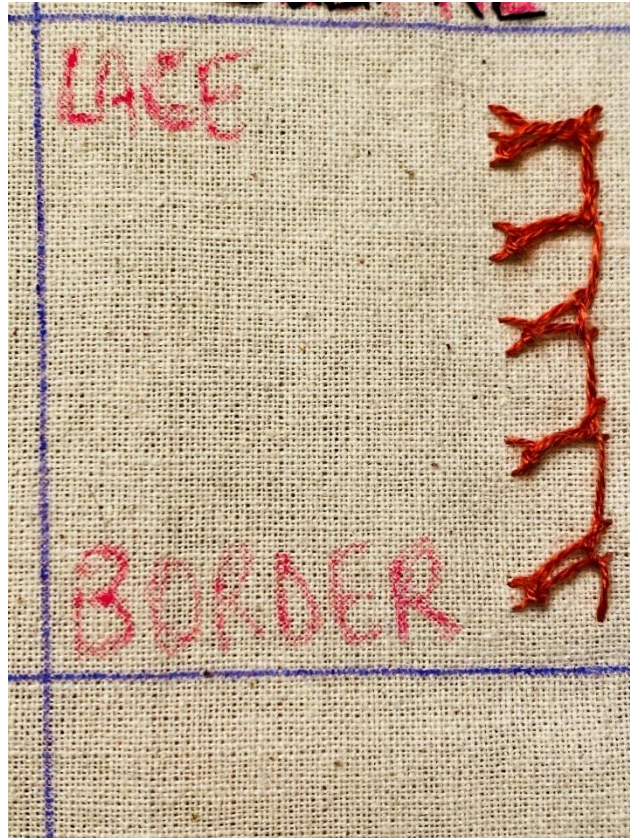


Then start the second stitch in the row.

Below your first stitch, on the right, do the thing where you bring the needle down and up through the fabric, without pulling the needle through.

Wrap the thread around the needle – under the needle right to left, and then over the needle left to right.





Then carry on in the same way, all the way down to the bottom of the square.
Then play with the lengths of the stitch, as you practice.





Being Ewe